

**le cabin**

**prefabricated sustainable house**

**Le Cabin, *efficient, compact, environmentally friendly living.***

**Design** Le Cabin is a solar powered, prefab construction that offers compact sustainable living. The cabin has been designed in detachable and re-locatable components of 15m<sup>2</sup>.

**Energy** Le Cabin is solar powered. Batteries supply ample electricity for water heating, cooking, refrigeration and pumping up groundwater.

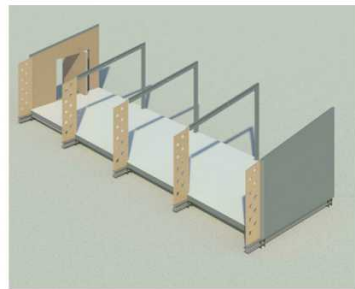
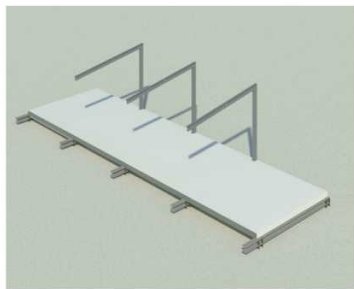
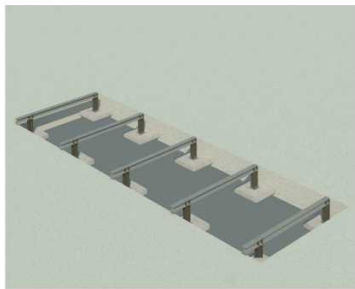
**Materials** the roof and the walls are made of insulated steel. The wooden floor and entrance walls are insulated with natural wool. The window frames as well as the stability wheels on the outside are made of Western Red Cedar.

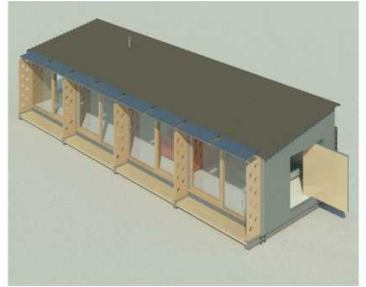
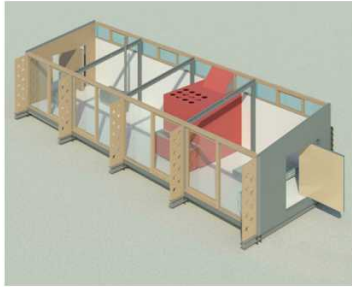
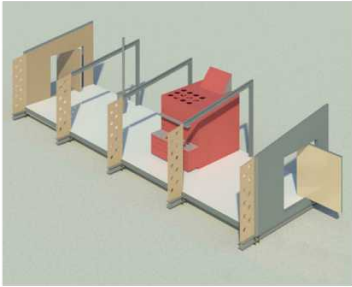
**Assembly** Le Cabin will be dispatched with all necessary construction information for local assembly. On request, the assembly in Europe can be taken care of by our own team.

**Multi functional use** Le Cabin is a multifunctional concept which can be used as a holiday home, a guest house, a studio, a garden house, a writers and artists retreat, temporary housing, etc.





























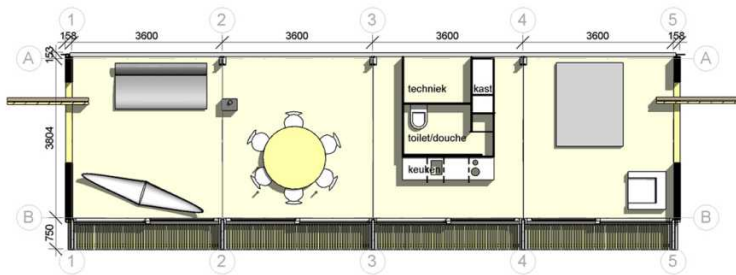




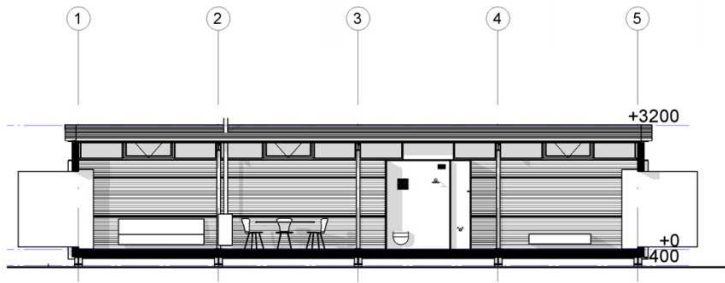




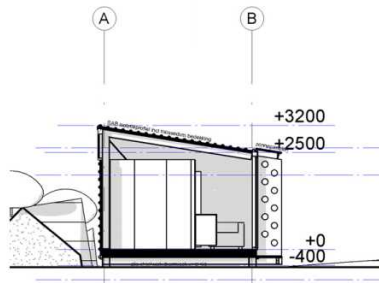
aanzicht voorgevel



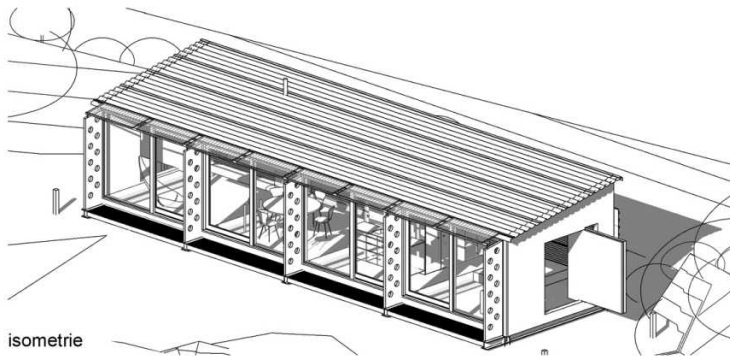
plattegrond



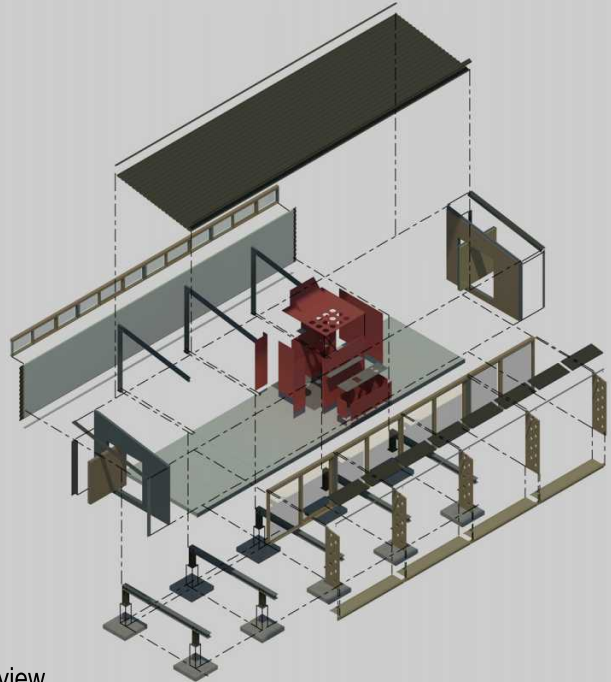
langsdoorsnede



dwarsdoorsnede



isometrie



exploded view

Suggested retail price **Le Cabin** (with reservation)

	4 elements	3 elements	2 elements
end elements 2x	€ 29.000	€ 29.000	€ 29.000
middle elements	€ 21.000	€ 10.500	€ -
extra construction	€ 3.500	€ 3.500	€ 3.500
overhead costs	€ 5.000	€ 4.000	€ 3.000
	-----	-----	-----
casco price	€ 58.500	€ 47.000	€ 35.500

*without assembly costs (negotiable), with VAT*

*prices of the pilot 'Nollenvalleij', The Netherlands*

assembly costs	€ 10.000
installations	€ 7.000
solar energy equipment	€ 6.500
interior walls	€ 5.000

**Tijmen Ploeg Architecten**

Prinseneiland 24C  
1013 LR Amsterdam

The Netherlands  
+31(0)6 15001733  
+31(0)20 6239557

[www.tijmenploegarchitecten.nl](http://www.tijmenploegarchitecten.nl)  
[www.lecabin.com](http://www.lecabin.com)

***photography***

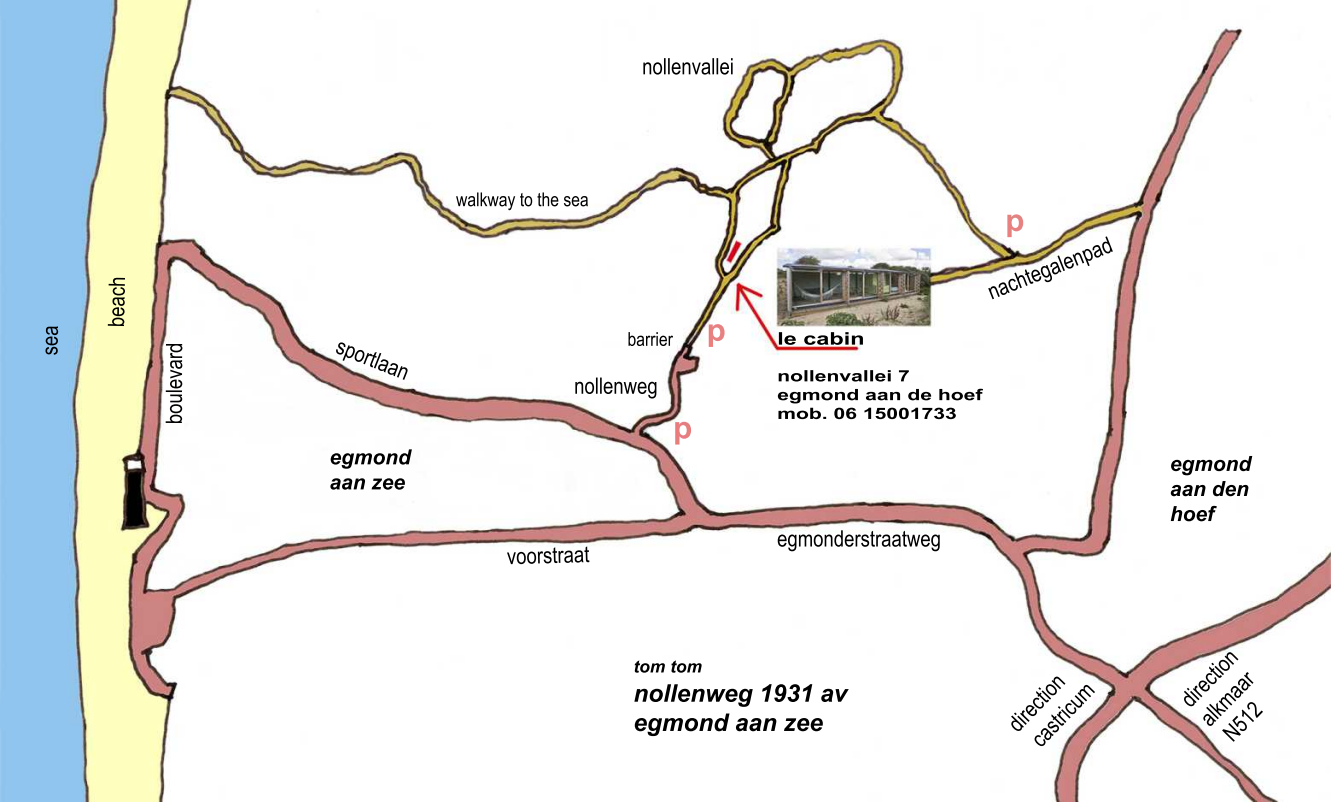
Leander Lammertink  
Betty Ras

***contractor***

Koos Wagemaker

***solar energy advisor***

Gideon Goudsmit



sea

beach

boulevard

egmond  
aan zee

sportlaan

walkway to the sea

nollenvallei

barrier

nollenweg



**le cabin**

**nollenvallei 7  
egmond aan de hoof  
mob. 06 15001733**

nachtgalenpad

egmond  
aan den  
hoef

voorstraat

egmonderstraatweg

tom tom  
**nollenweg 1931 av  
egmond aan zee**

direction  
castricum

direction  
alkmaar  
N512