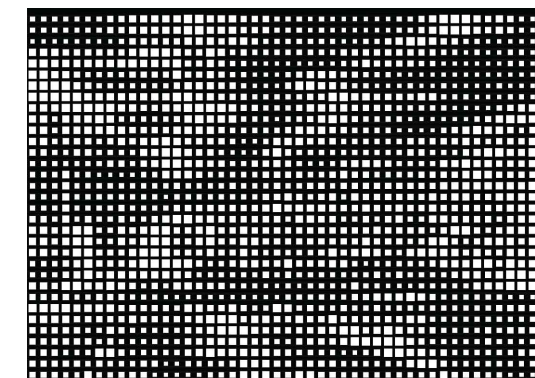


SITUATIE



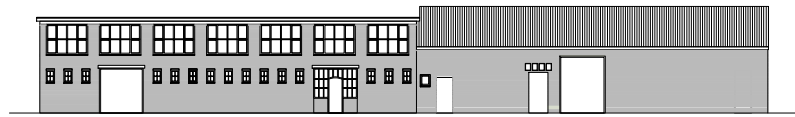
Gedeelte woning aan achterkant met bestaande staalconstructie.
Dak van stalen golfplaten zoals bestaand.

Gedeelte straatzijde met nieuwe verdiepingsvloer met buitenruimte.
Dit gedeelte bevat ook de installaties en het groene dak.

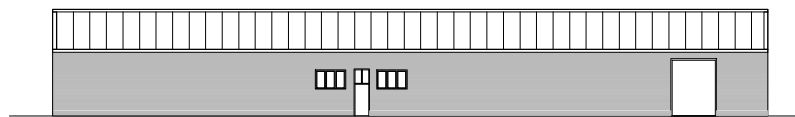


Iedere woning heeft een unieke geperforeerde schuifdeur waarvan het patroon gebaseerd is op een historische foto.

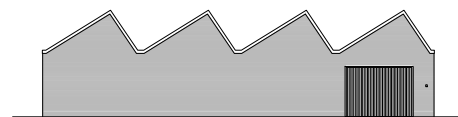
CONCEPT



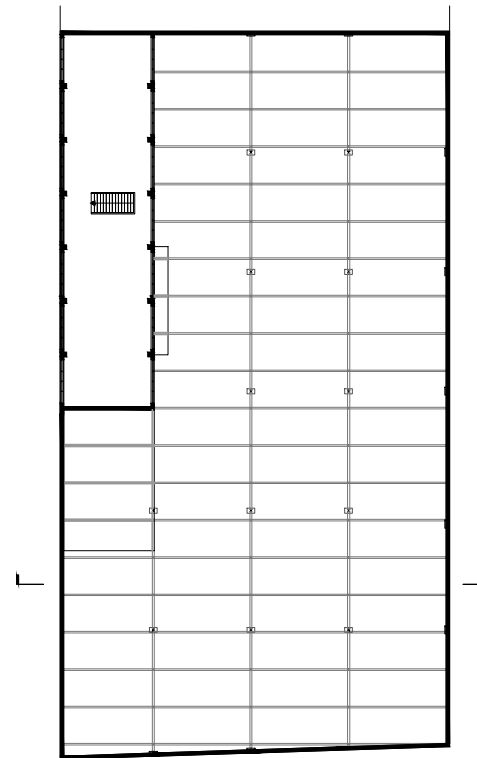
ZUID WEST GEVEL



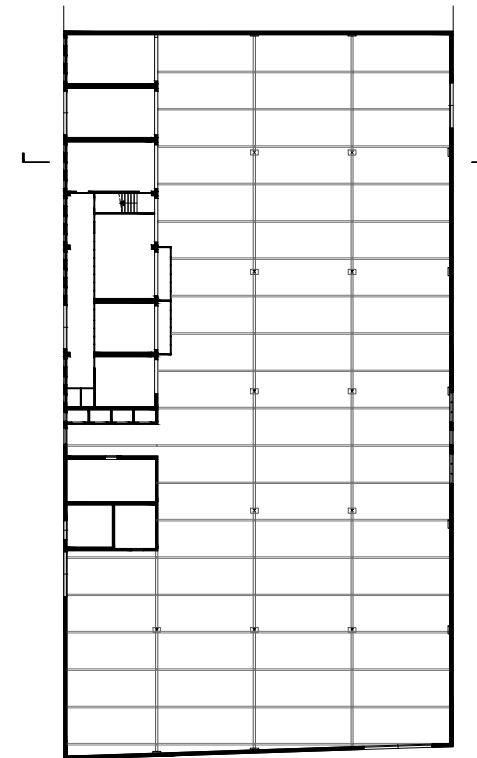
NOORD OOST GEVEL



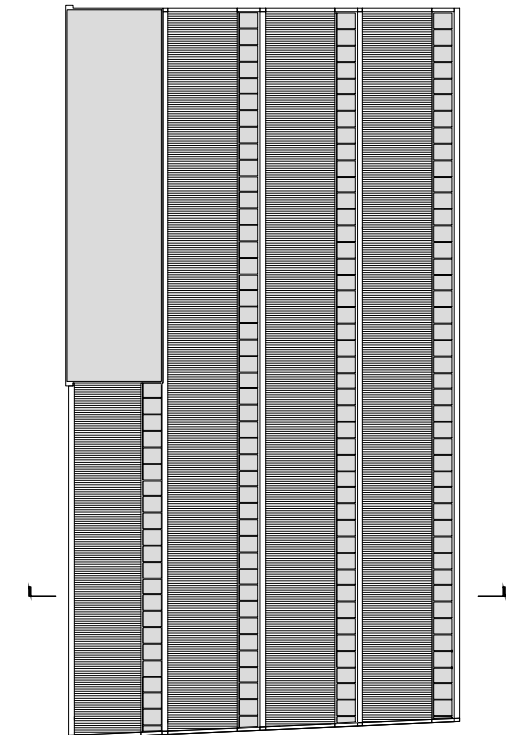
ZUID OOST GEVEL



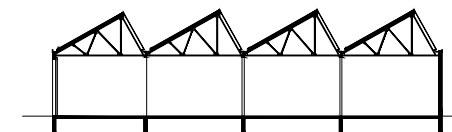
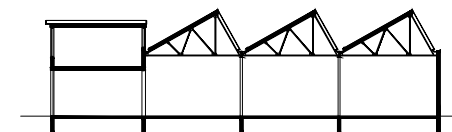
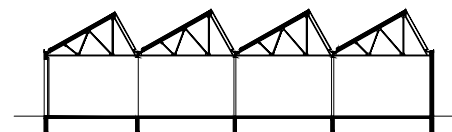
BEGANE GROND



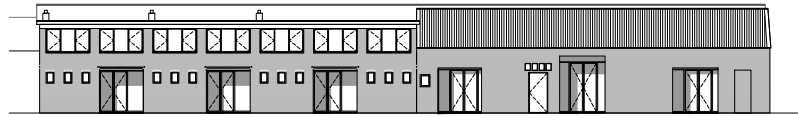
1e VERDIEPING



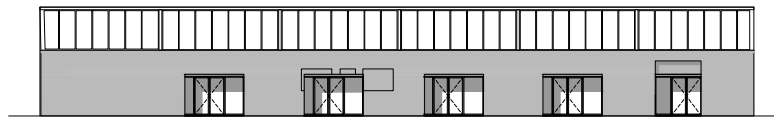
DAK



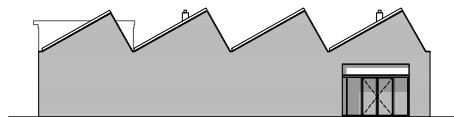
BESTAAND



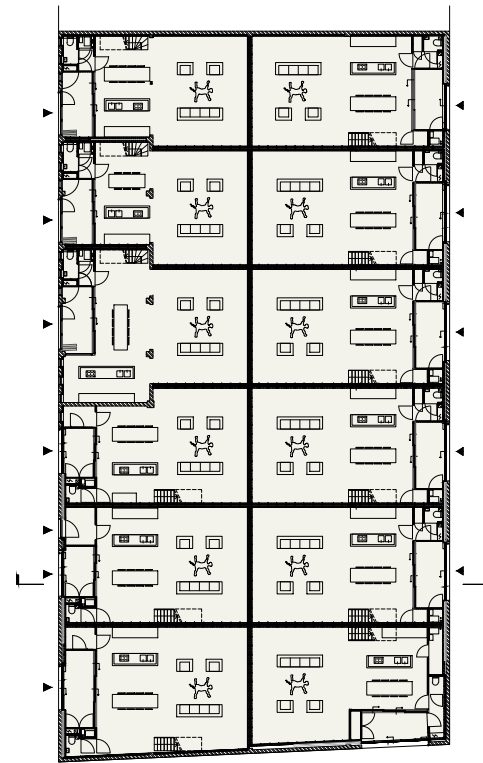
ZUID WEST GEVEL



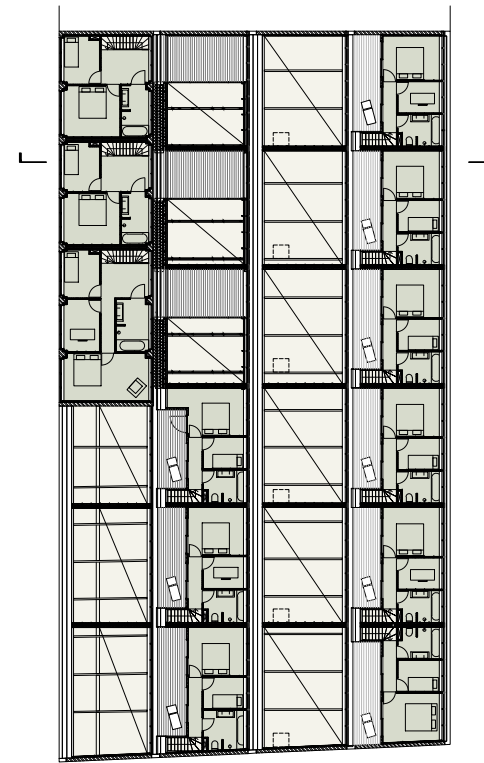
NOORD OOST GEVEL



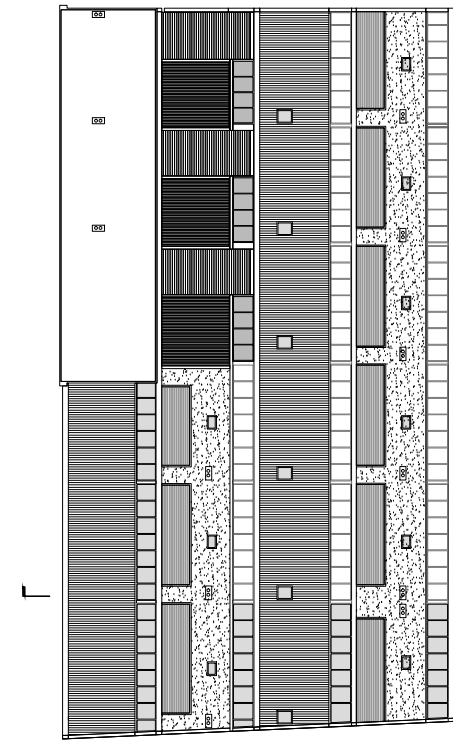
ZUID OOST GEVEL



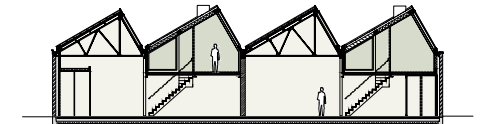
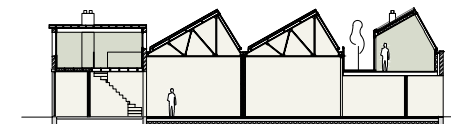
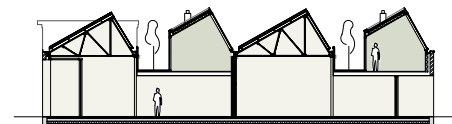
BEGANE GROND



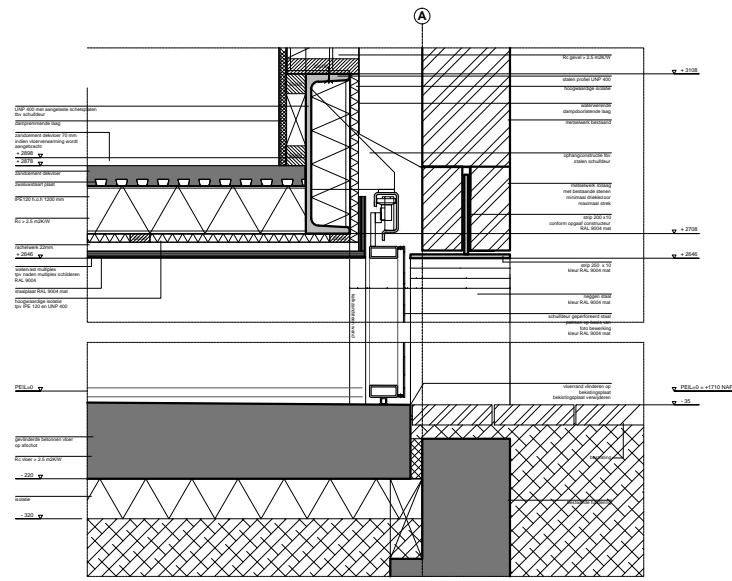
1e VERDIEPING



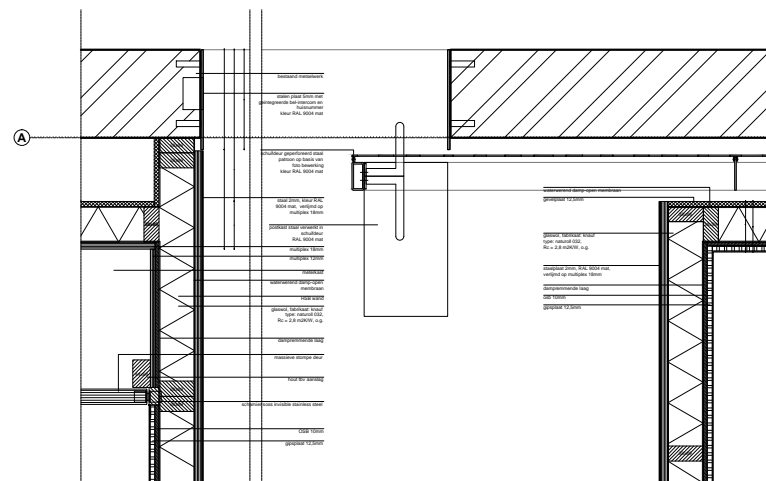
DAK



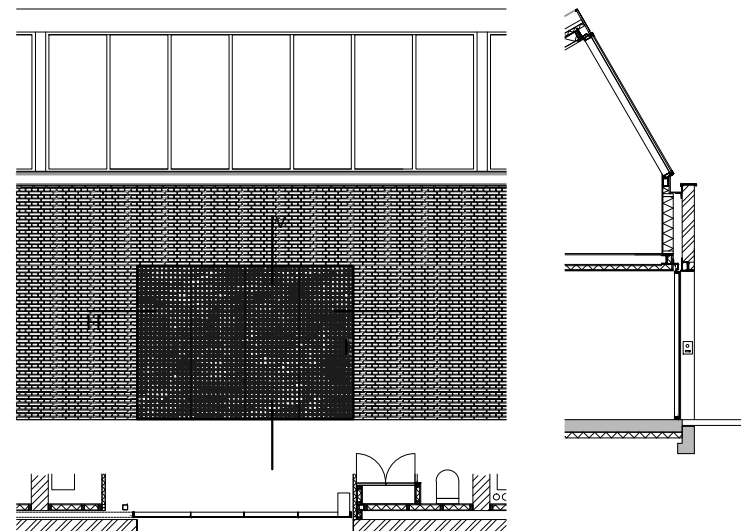
NIEUW



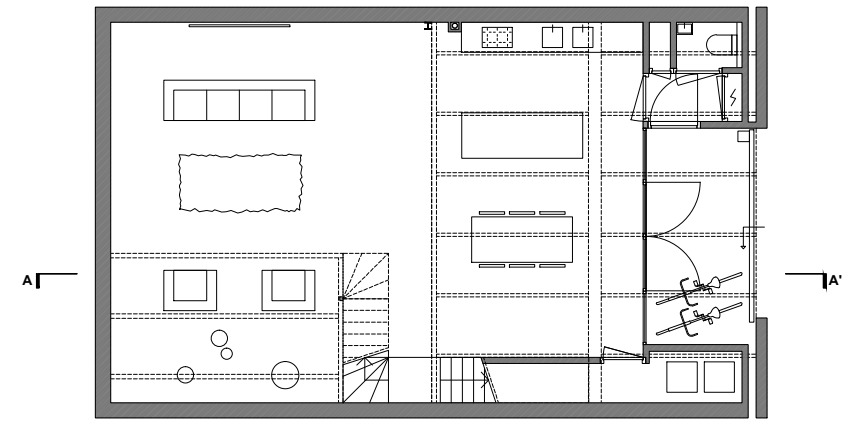
V



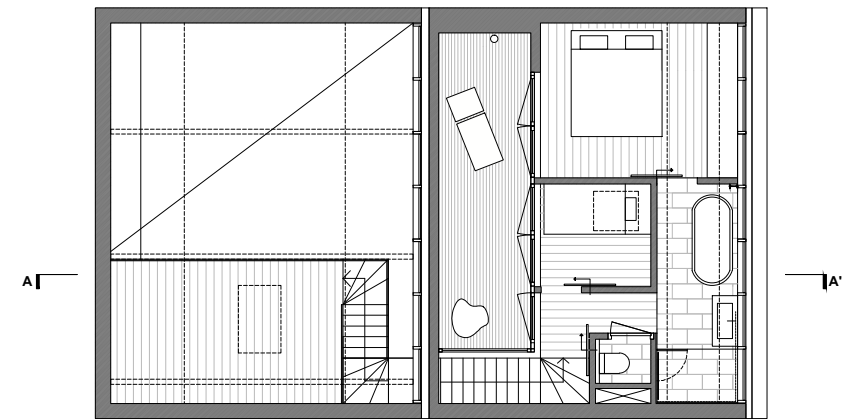
H



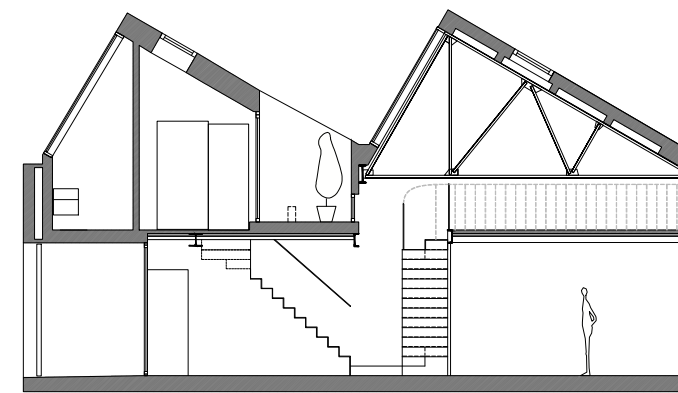
DETAILS



BEGANE GROND



1e VERDIEPING



DOORSNEDE A-A'

NIEUW JONKERSTRAAT 52