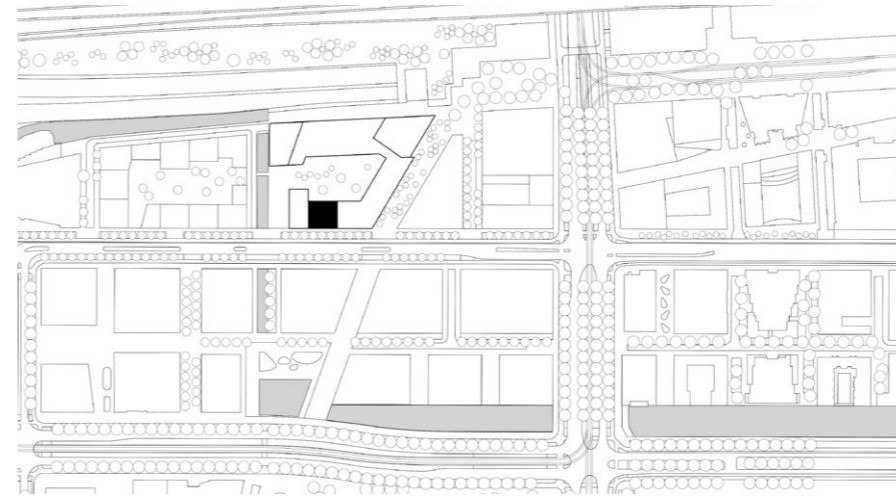


Stepstone, Amsterdam

Sociale woontoren



Opdracht:
Woonstichting Lieven de Key

Aannemer:
VORM Bouw

Buurt:
Zuidas, Amsterdam

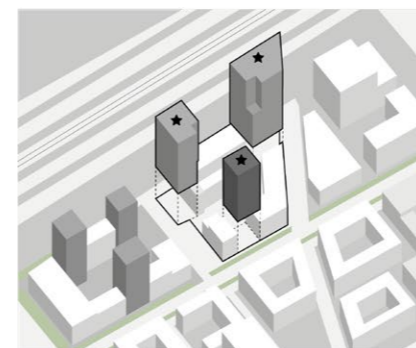
BVO:
12.900m²

Doelgroep:
Starters < 28 jaar voor max. 5 jaar

Woningen:
216 sociale huurappartement

Variatie:
1K en 2K: 22-40m²,
3K-maisonnettes: 45-60m²

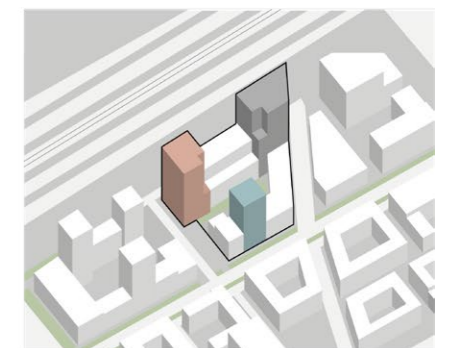
Extra:
Collectieve lounge op de begane grond en 1e verdieping,
collectief sportdak, inpandige fietsen- en scooterstalling



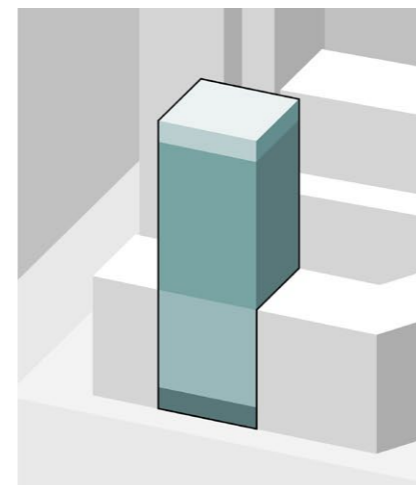
Dambordpatroon



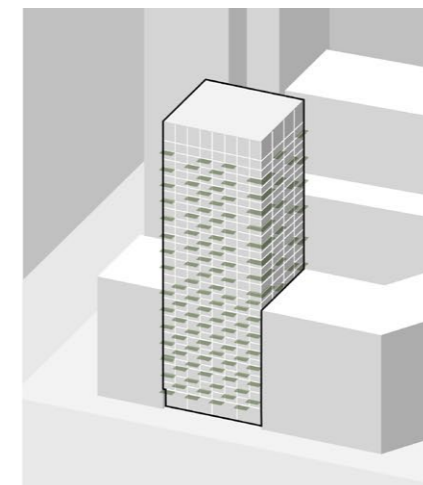
Alzijdig volume



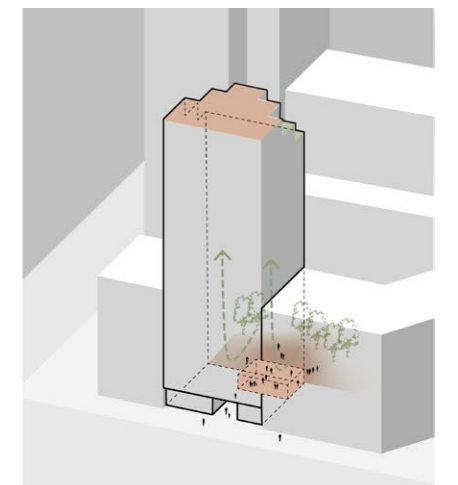
Eigen karakter



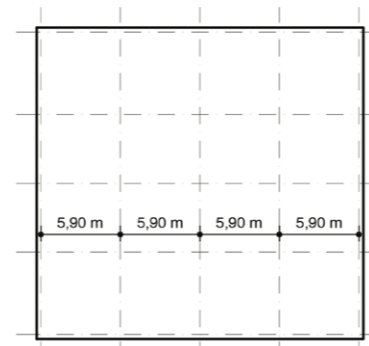
Klassieke opbouw



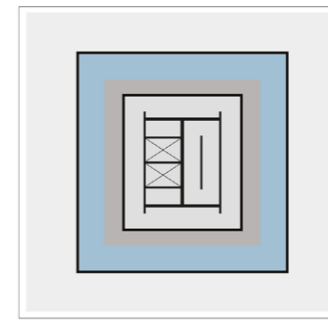
Raster rondom



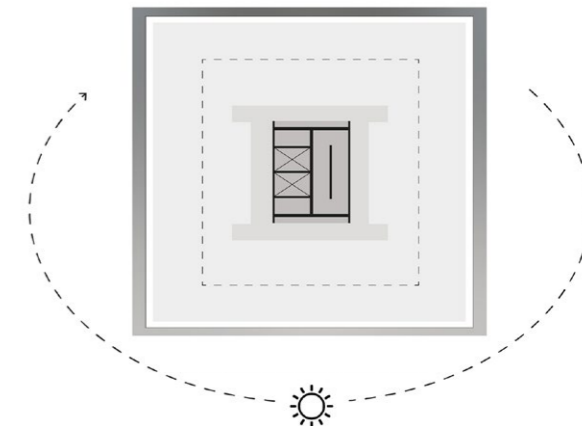
Collectieve ruimtes



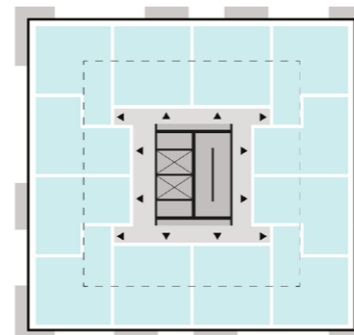
Helder stramien



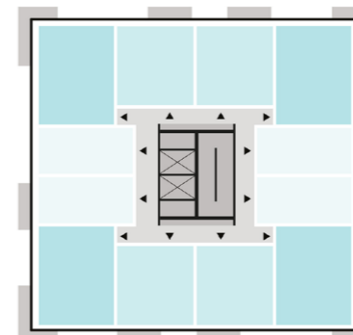
Slimme kern/ring



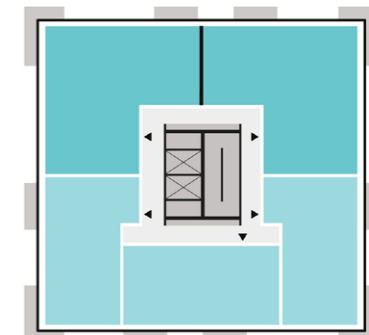
Balkons in hoekpositie



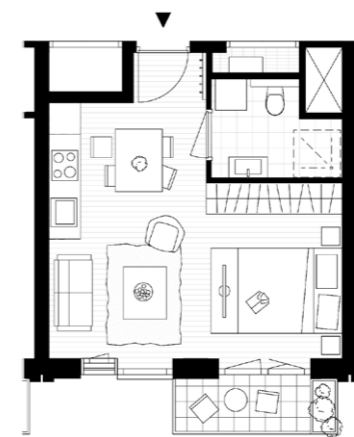
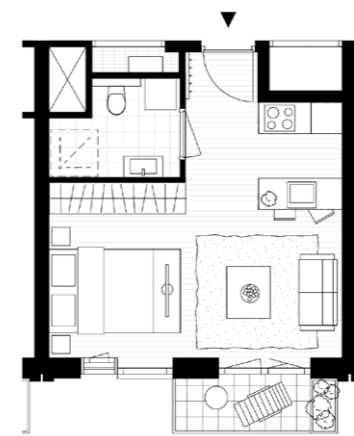
Basis: 12x 30m²



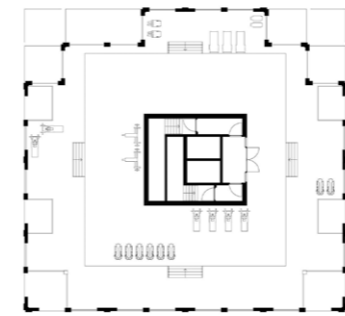
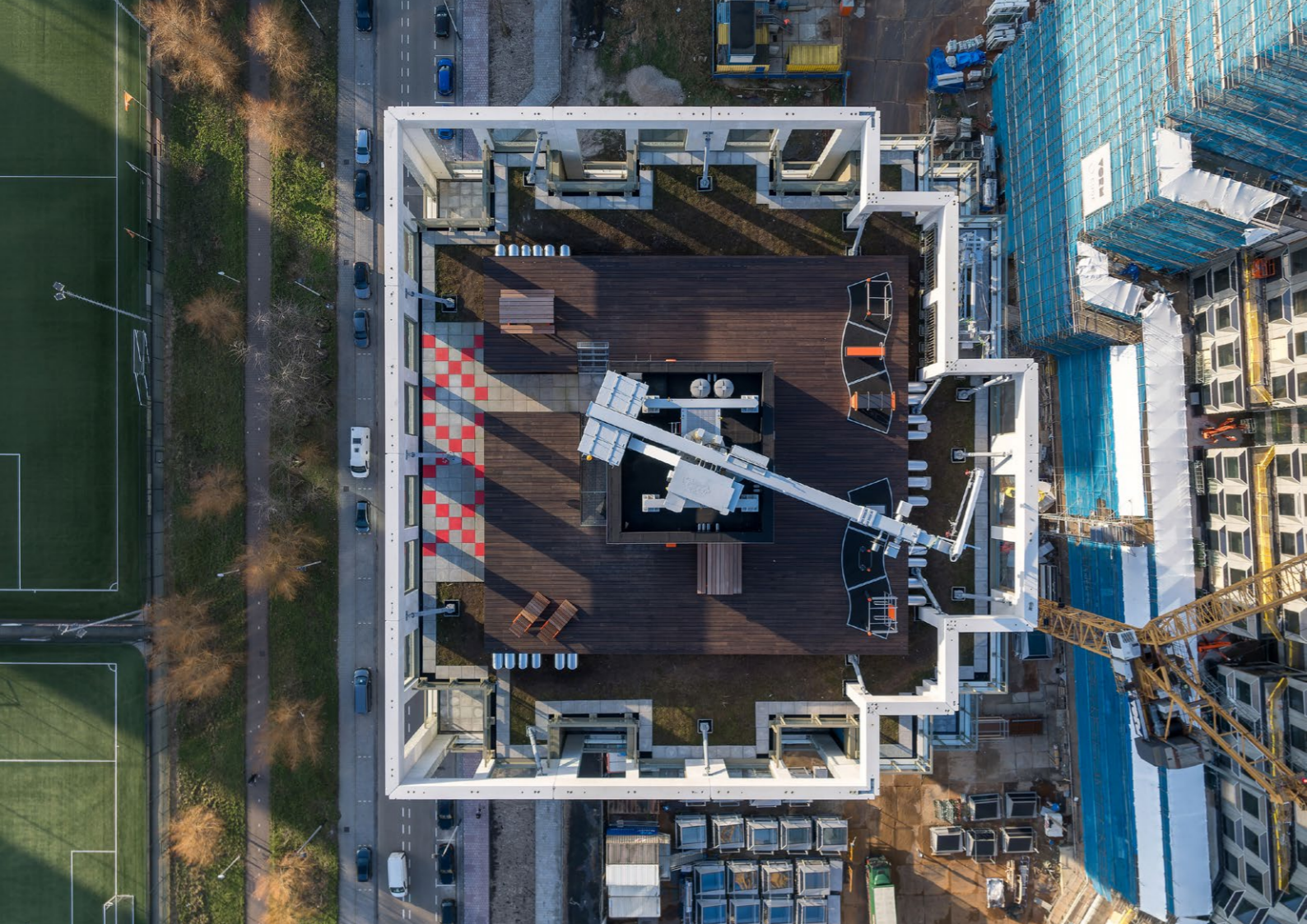
Combi 20,30,40m²



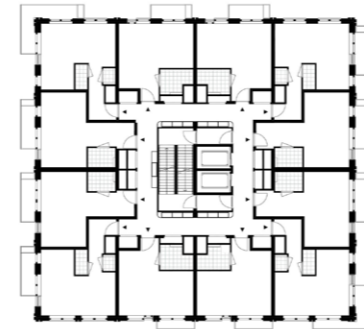
Combi 60 en 90m²



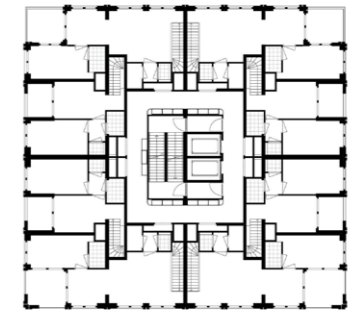
Woningvariatie



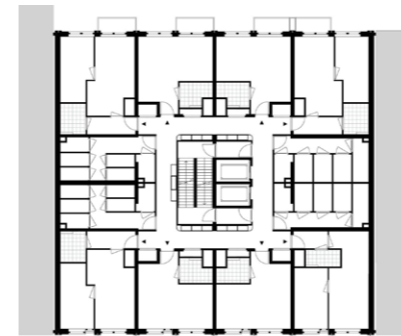
Sportdak (24^e verdieping)



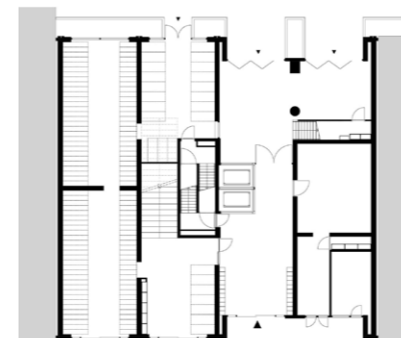
Standaard bovenbouw (12x 30m²)



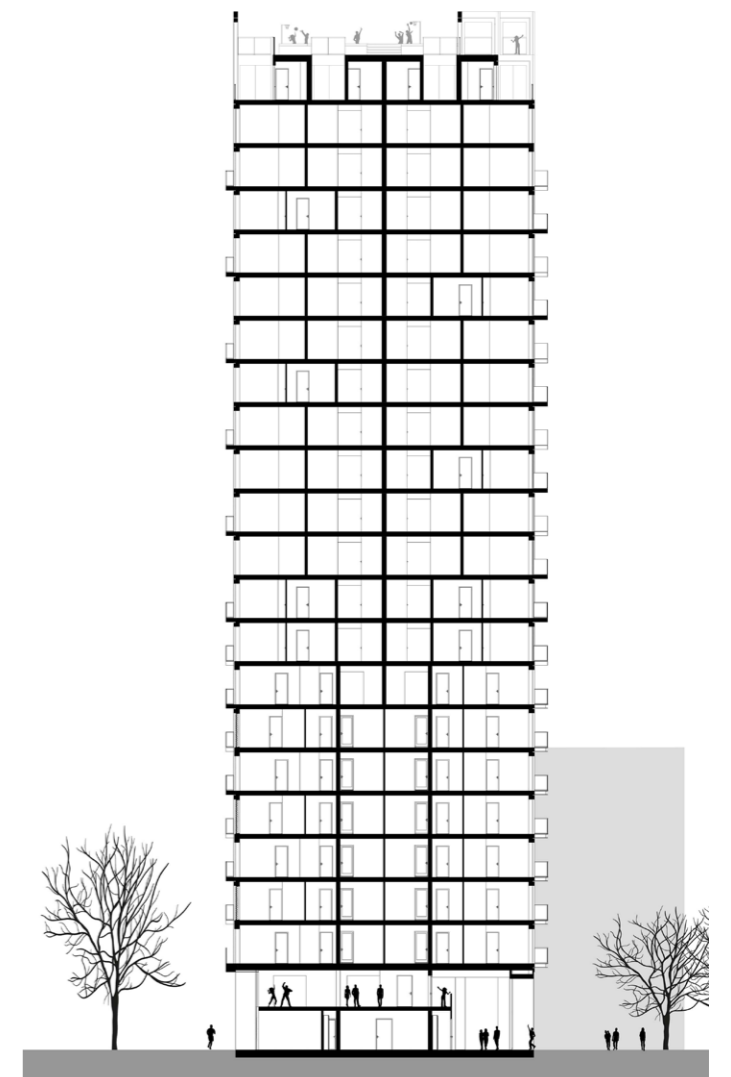
21^e / 22^e verdieping
8 basisappartementen en
8 maisonnettes



Standaard onderbouw

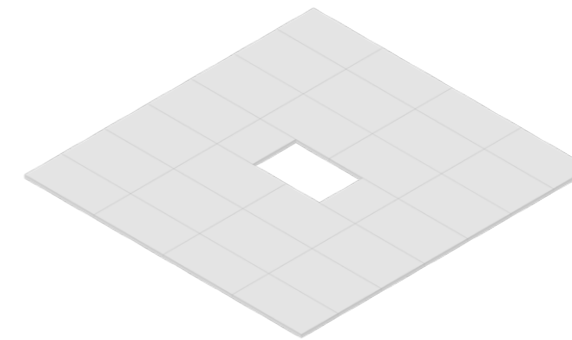


Begane grond

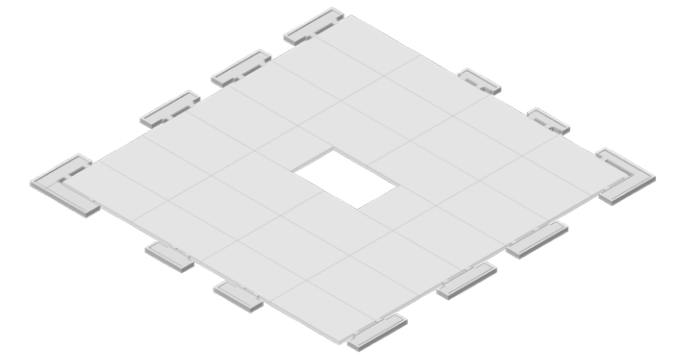




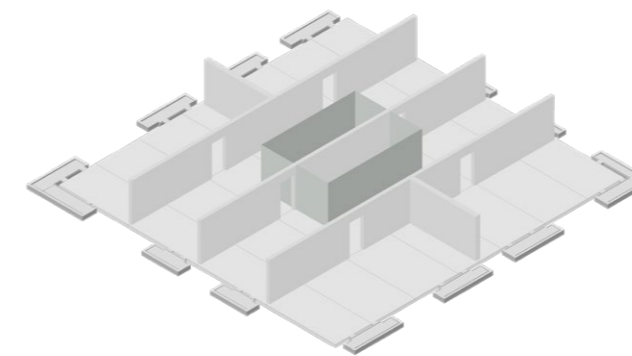
Stapelning prefab-elementen



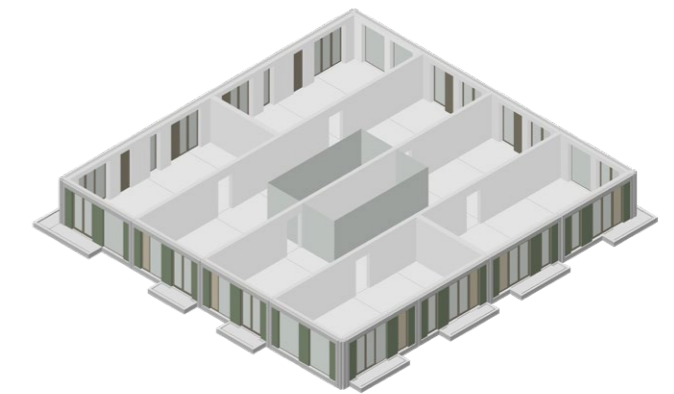
1 Vloer



2 Balkons



3 Binnenwanden



4 Gevels

